



SHANGHAI KINGDOM INTERNATIONAL TRADE CO., LTD.

DEDICATED TO INCREASING YOUR EFFICIENCY



PRESS BRAKE

WC67Y/K SERIES HYDRAULIC PRESS BRAKE



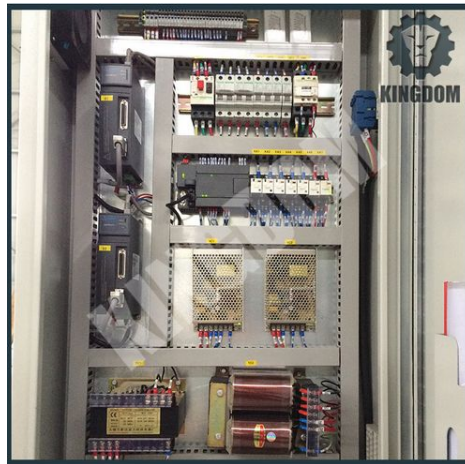
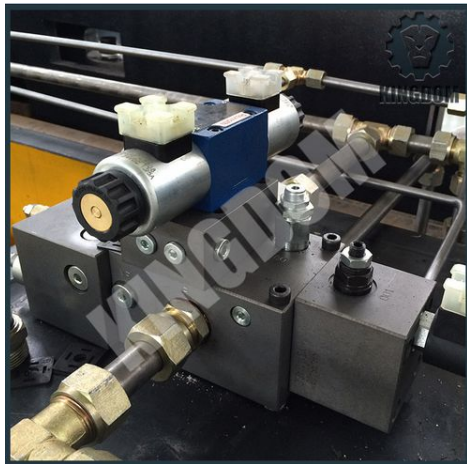
I. Brief Introduction

KINGDOM's press brakes have the advantages of high quality, durability and high precision. The main frames of machine are constructed from rolled, stress relieved solid steel to prevent distortion during the bending process and under extreme continuous loads.

Adjustable synchronized torsion bar with positive stop system which is controlled by the Digital Control unit, the bending beam parallelism tolerance will be consistent and accurate to 0.01mm.

II. Main Features





1. The whole structure:

- Steel plate welded structure, hydraulic transmission, accumulator return, holistic processed, vibrating to eliminate stress, high strength and good rigidity.
- Mechanical torque system makes sure the synchronization of cylinders.
- The stroke of slider and back gauge is adjusted automatically by double servo motors or transducer, and showed on CNC Mechanical torque or NC control panel.
- Slanting wedges can be chosen to install on the top dies which can be adjusted by hands or automatically. Hydraulic compensation system is installed under the worktable.

2. Hydraulic system:

- Oil seals by Japanese, NOK.
- Overload & overflow protection to ensure there is no leakage and protect hydraulic system, and the oil level can be read directly.

3. Servo motorized back gauge:

- CNC Back gauge system with X axis by AC servo motor driven ball screw shafts and on linear bearings with an accuracy of 0.01mm.
- Back gauge has well enough mechanical strength and rigidity with tank-type gauge structure.
- High-precision ball screw and linear guide-way. Particular finger-stop design, enlarge the range of back gauge.

4. Electrical parts and protection device:

- Schneider or Siemens Low-voltage apparatus. In accordance with international standards, reliable safety, long life, good anti-interference ability, a radiation unit is fitted in electrical cabinet.
- Protective fence and the safety interlock to ensure the operation safety. Have a movable single-hand pedal switch, easy to operate.
- Light screen protection or Laser protection are optional.

III. Standard Accessories

- Swivel pendant control unit operation
- Sliding front sheet support arms.
- Emergency stop buttons conveniently located on control panel and foot control.
- Mobile dual operation foot control.
- Segmented offset top punch.
- Solid one piece four way multi vee ("v") die block.
- Quick action top punch tool holder system with wedge type adjustment.
- Powered operated lead screw back gauge
- Oil tank level indicator.



- Metal constructed safety guarding surrounding machine with clear side viewing panels.
- Integrated hydraulic system allowing rapid approach switching automatically to slow bend.

Optional:

- NC control system Estun E21
- CNC control system Delem DA-41
- CNC control system Delem DA-52
- CNC control system Delem DA-56
- CNC control system Delem DA-65W

IV. Technical Parameter

Model	Pressure (kN)	Length of Working Table	Distance Between Housings	Throat Depth	Max. Stroke Length	Max. Open Height	Electric Power (kW)	Machine Dimension (L x W x H)
40T/2200	400	2200	1775	250	100	320	5.5	2300 x 1500 x 2000
40T/2500	400	2500	1975	250	100	320	5.5	2600 x 1500 x 2000
50T/1600	500	1600	1275	250	100	320	5.5	1700 x 1600 x 2200
63T/2000	630	2000	1695	250	120	360	5.5	2100 x 1600 x 2300
63T/2500	630	2500	2095	250	120	360	5.5	2600 x 1600 x 2300
63T/3200	630	3200	2570	250	120	360	5.5	3300 x 1600 x 2300
80T/2500	800	2500	2095	250	120	360	7.5	2600 x 1600 x 2300
80T/3200	800	3200	2565	320	120	360	7.5	3300 x 1700 x 2300
80T/4000	800	4000	3165	320	120	360	7.5	4100 x 1700 x 2300
100T/3200	1000	3200	2560	320	120	360	7.5	3300 x 1800 x 2400
100T/4000	1000	4000	3160	320	120	360	7.5	4100 x 1800 x 2400
125T/3200	1250	3200	2550	320	120	360	7.5	3250 x 1920 x 2450
125T/4000	1250	4000	3450	320	120	360	7.5	4000 x 1920 x 2500
160T/3200	1600	3200	2540	320	180	440	11	3300 x 1600 x 2600
160T/4000	1600	4000	3140	320	180	440	11	4100 x 2000 x 2600
160T/6000	1600	6000	4740	320	180	440	11	6100 x 2000 x 2600
200T/3200	2000	3200	2540	320	250	530	11	3300 x 2100 x 2800
200T/4000	2000	4000	3140	320	250	530	15	4100 x 2100 x 2900
200T/5000	2000	5000	3940	320	250	530	15	5100 x 2100 x 3000
250T/4000	2500	4000	3120	400	250	560	18.5	4100 x 2200 x 3500
250T/5000	2500	5000	3920	400	250	560	18.5	5100 x 2200 x 3500
250T/6000	2500	6000	4720	400	250	560	18.5	6100 x 2200 x 3500

300T/3200	3000	3200	2510	320	250	530	22	3350 x 2600 x 3900
300T/4000	3000	4000	3100	400	250	530	22	4150 x 2600 x 3900
300T/5000	3000	5000	3910	400	250	560	22	5100 x 2600 x 4000
300T/6000	3000	6000	4710	400	250	560	22	6100 x 2600 x 4000
300T/7000	3000	7000	5620	400	250	560	22	7100 x 2600 x 4400
320T/7000	3200	7000	5620	400	250	560	22	7100 x 2600 x 4400
350T/6000	3500	6000	5100	400	250	560	30	6100 x 2600 x 4200
350T/7000	3500	7000	5620	400	250	560	30	7100 x 2600 x 4500
400T/4000	4000	4000	3100	400	300	620	30	4100 x 2700 x 3800
400T/6000	4000	6000	4280	400	320	620	30	6100 x 2800 x 4200
500T/5000	5000	5000	4100	400	320	630	37	5100 x 3000 x 4400
500T/6000	5000	6000	4820	400	320	630	37	6100 x 3000 x 4700
500T/7000	5000	7000	5620	400	320	630	37	7100 x 3000 x 4900
600T/6000	6000	6000	4820	400	320	630	45	6100 x 2965 x 4700
600T/7000	6000	7000	5620	400	320	630	45	7100 x 2965 x 4900

Remarks:

1. Minimum Order Quantity: 1.
2. **Package:** film protective package.
3. **Payment terms:** 30% prepayment by T/T and 70% balance before shipping.



Workshop



KINGDOM

Packing



About Us

Shanghai Kingdom International Trade Co., Ltd. (SKITC), with the merit of being adjacent to Shanghai International Financial Center and Shanghai International Shipping Center, aims at providing highly efficient metal processing solutions through our local factories in China. Products from SKITC include hydraulic ironworkers, punching machines, bending machines, cranes et al., which have strong customer base and excellent evaluation from customers in Asia, Africa and Latin-America.

SKITC has developed long term cooperation with a number of universities and research institutes in China. SKITC has world class teams for R&D and services. Most R&D team members have Ph.D. degree or M.S. degree in top universities in China. Team members are proficient in mechanical design, manufacturing and energy saving. SKITC can provide customized solutions, including product design, function optimization and cost reduction, according to customers' needs. The purpose of our work is to improve customers' production efficiency. Our excellent design capabilities enable our products leading in industry. Our elite teams can provide customers with professional, customized, and all-round services around the clock.

By believing the philosophy of “dedicated to increasing your efficiency” and having elite teams in R&D and services, we would like to cooperate with elites from all over the world, provide world class facilities for our customers and promote the development of foreign trade together.

